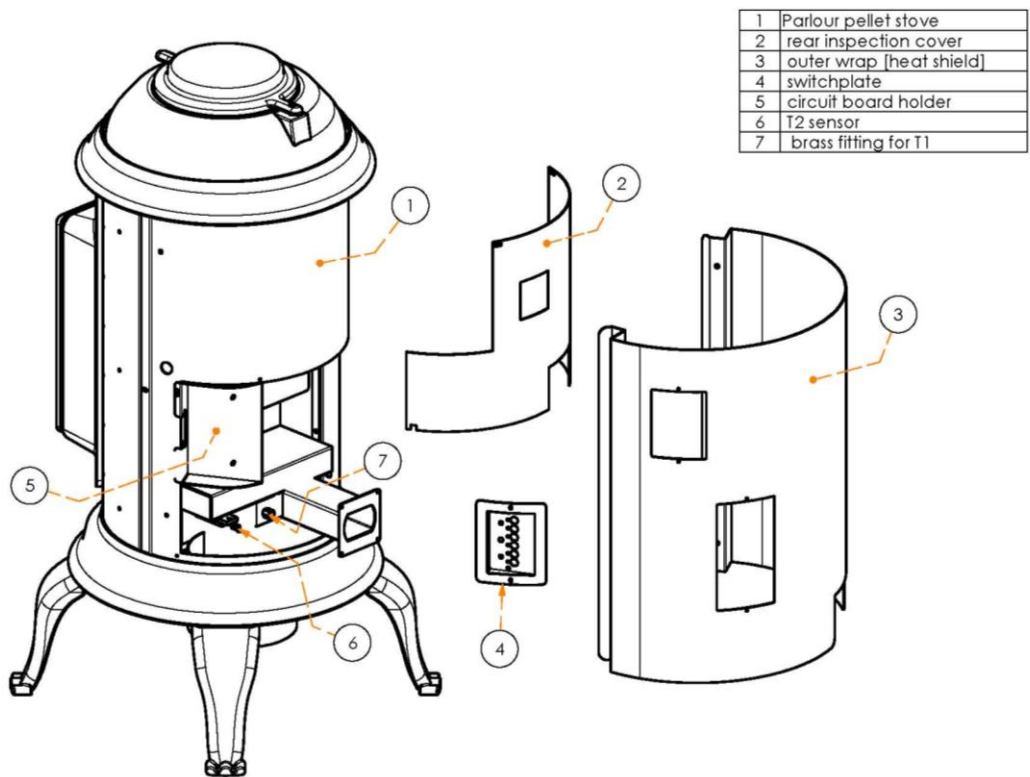


Theelin Hearth Products

How To Replace the T2 Sensor in the Parlour & Gnome Pellet Stove



How to Replace the T2 Sensor in the Parlour & Gnome Pellet Stove

Step 1

CAUTION: Unplug power cord prior to performing any service on stove. Ensure stove has cooled down.

Locate Switch Panel on stove. When facing the front of the stove the Switch Panel is located on the right hand side.



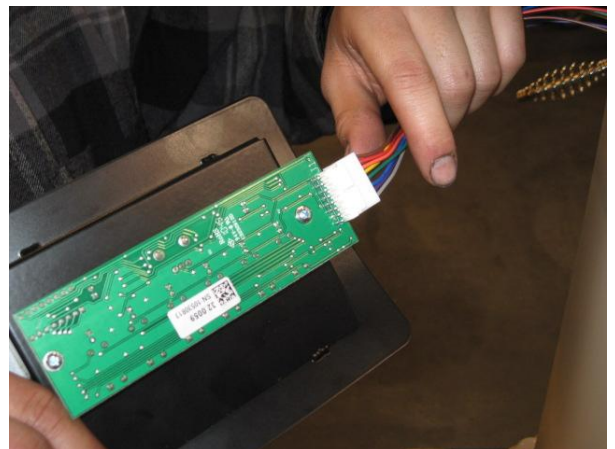
Step 2

Remove (2) black 8-32 phillips pan head screws.



Step 3

Carefully lift Switch Panel out of Wrapper and unplug connector.



How to Replace the T2 Sensor in the Parlour & Gnome Pellet Stove

Step 4

Apply masking tape to Bottom Ring below the front of the Wrapper (both sides). This will protect the Bottom Ring from scratches while the Wrapper is removed.



Step 5

Apply masking tape to Bottom Ring below the front of the Wrapper (both sides). This will protect the Bottom Ring from scratches while the Wrapper is removed.



Step 6

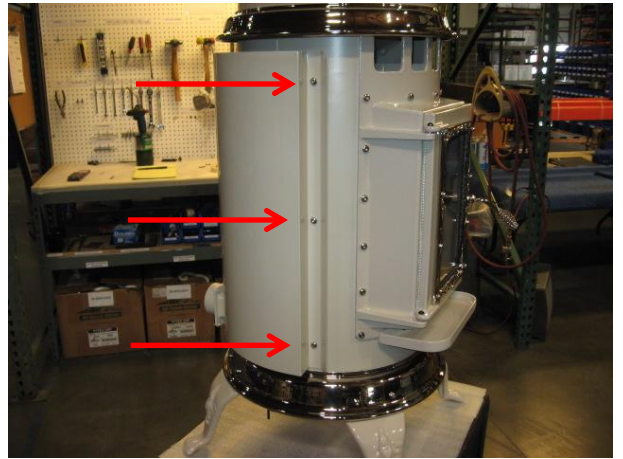
Place a rag over the Exhaust Port in the back of the stove. This will protect the Wrapper when removing the Wrapper.



How to Replace the T2 Sensor in the Parlour & Gnome Pellet Stove

Step 7

Locate the (6) T30 Torx screws on the left and right hand side of the Wrapper.



Step 8

Locate the (6) T30 Torx screws on the left and right hand side of the Wrapper.



Step 9

Carefully remove all (6) T30 Torx screws with a T30 driver.

*Note: when replacing the Wrapper, the stainless steel washer goes between the screw head and the Wrapper. The mica washer goes between the Wrapper and the stove.



How to Replace the T2 Sensor in the Parlour & Gnome Pellet Stove

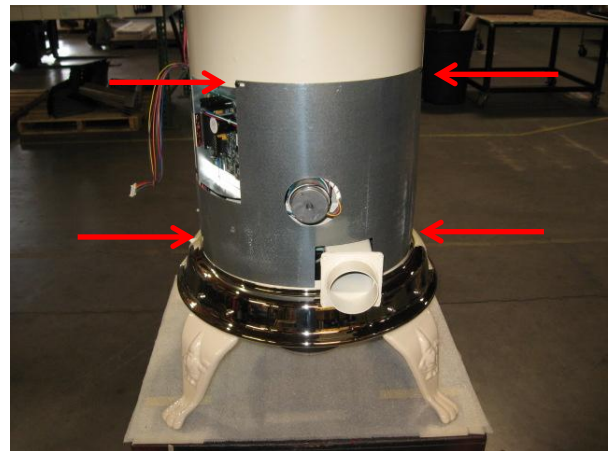
Step 10

Carefully remove the Wrapper from the stove.



Step 11

Locate the (4) 8-32 black philips pan head screws on Rear Inspection Cover.



Step 12

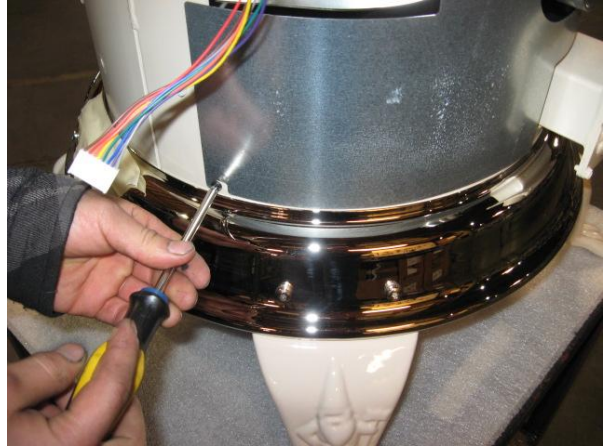
Remove top (2) 8-32 black philips pan head screws from Rear Inspection Cover.



How to Replace the T2 Sensor in the Parlour & Gnome Pellet Stove

Step 13

Loosen, but do not remove, the bottom (2) 8-32 black philips pan head screws on the Rear Inspection Cover.



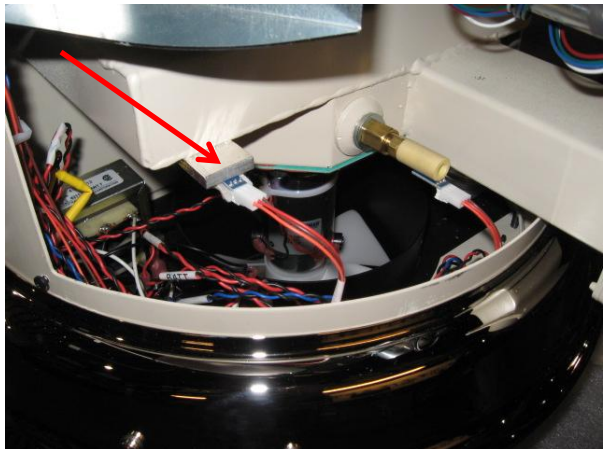
Step 14

Remove Rear Inspection Cover.



Step 15

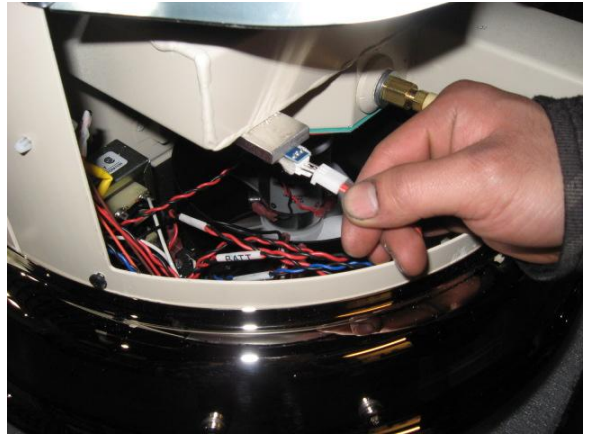
Locate the T2 Sensor.



How to Replace the T2 Sensor in the Parlour & Gnome Pellet Stove

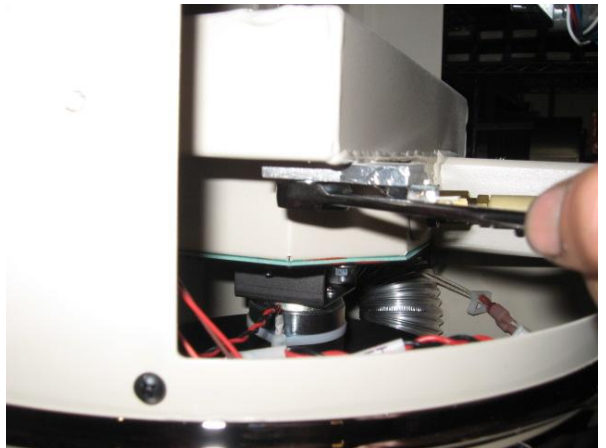
Step 16

Unplug T2 Sensor.



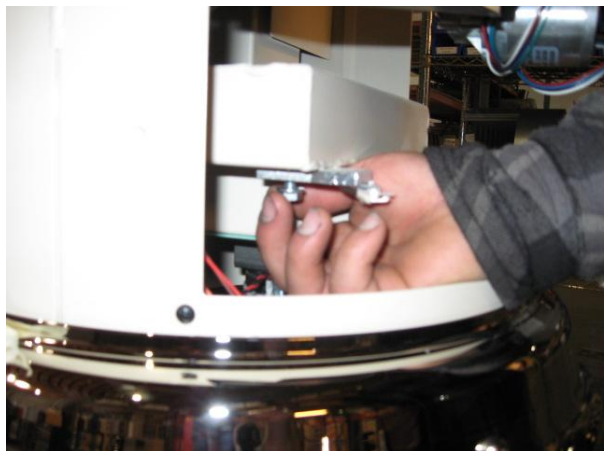
Step 17

Using a 7/16 open ended wrench, loosen the hex nut holding the T2 Sensor to the stove.



Step 18

Once the hex nut is loose, use fingers to remove hex nut.



How to Replace the T2 Sensor in the Parlour & Gnome Pellet Stove

Step 19

Remove T2 Sensor.

Replace with new T2 Sensor.

Reassemble stove in reverse order of removal.

